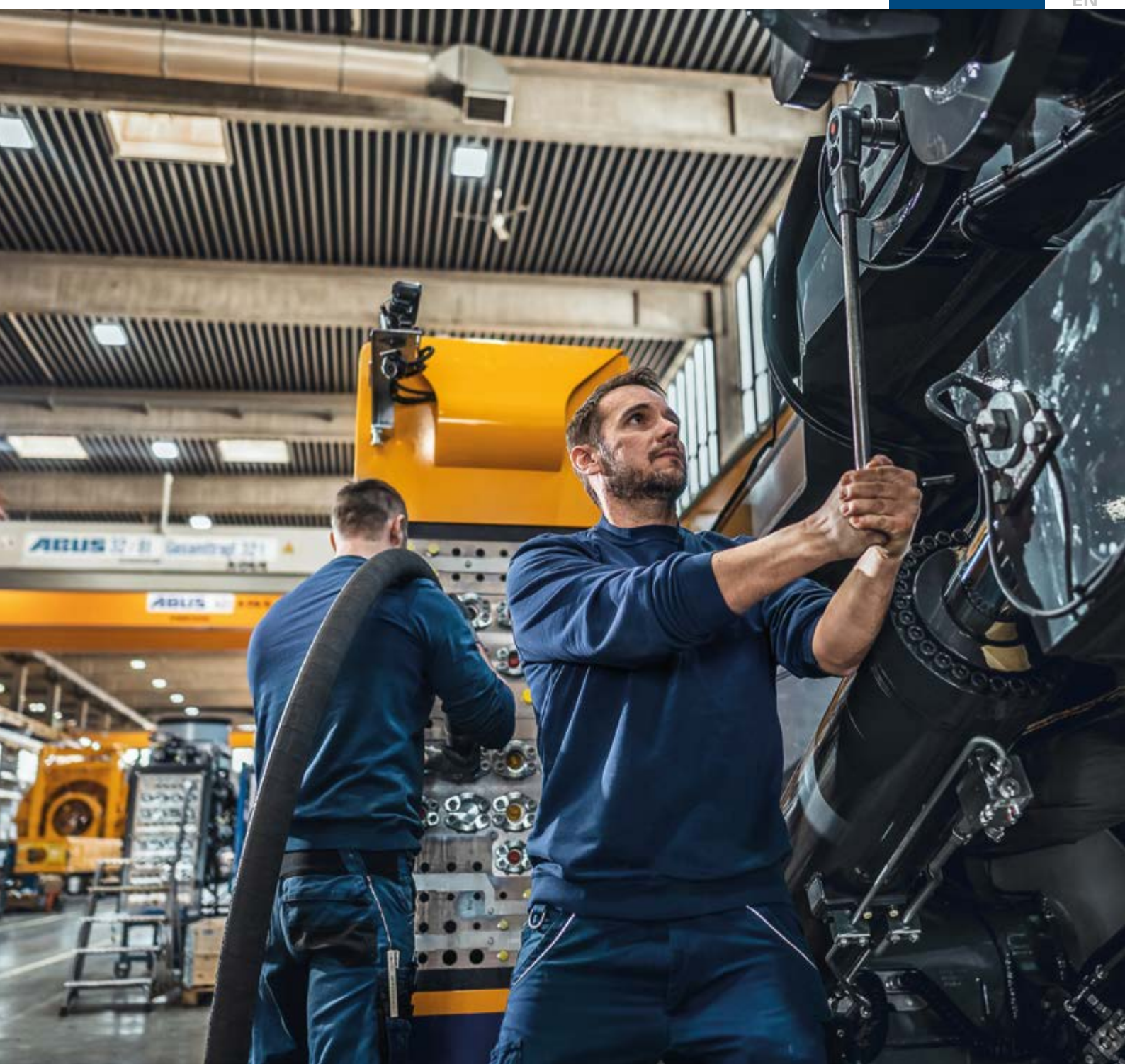




BAUER MASCHINEN

EN



WHAT WE STAND FOR

For more than half a century, we have been manufacturing equipment for challenges in the field of special foundation engineering. Over the years, we have continually developed and are now leading in our sector. This time period has been characterized by innovations, growth and the quest for excellence. In the process, our portfolio has increased constantly to offer a wide range of drilling, cutter, pile driving and mixing technology all the way to specialized methods that meet our customers' needs.

Close collaboration with our customers and partners is important to us. We take time to understand their requirements and goals, working closely together with them to develop tailor-made solutions. We value open communication, clear coordination and transparent processes to ensure everyone involved in the project is committed and informed.

Over time, we have also developed an increasing awareness of sustainable construction techniques and eco-friendly methods. New digital solutions allow our customers to use resources more efficiently and to safely execute construction projects.

Our vision: We make special foundation engineering an easy task

As established experts, we have specialized in taking on and successfully executing even the most difficult tasks. Our work includes developing the right equipment technology for resource extraction as well as equipment for foundations of offshore wind turbines, or securing flood protection structures. Our guiding principle: We want to expand the limits of what is possible and guide special foundation engineering towards an innovative and sustainable future.



Want to experience what Bauer machines stand for? Simply click here.



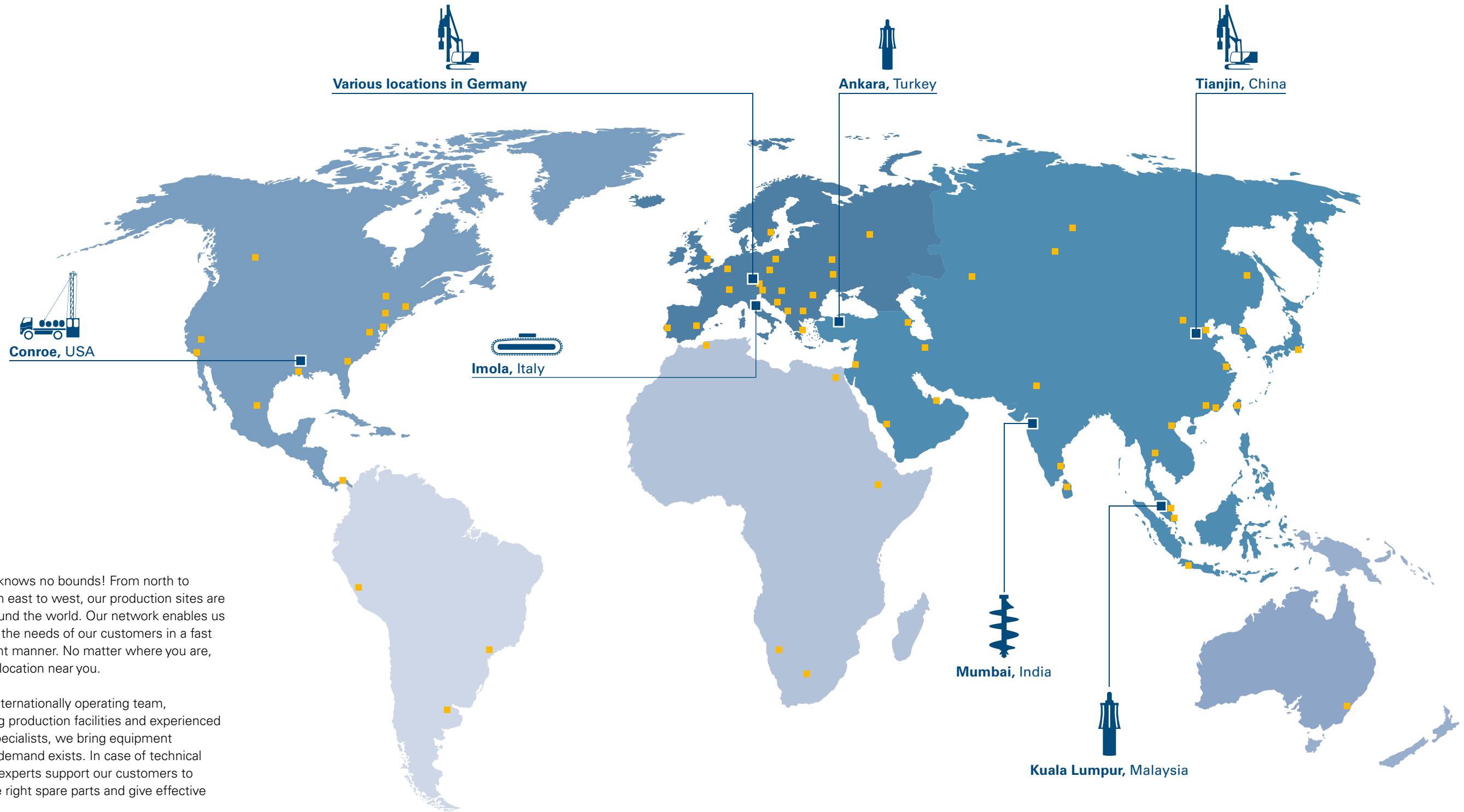
”

With an excellent team, revolutionary ideas and the right dose of entrepreneurial spirit, we are well equipped for the future.“

Dr.-Ing. Rüdiger Kaub
Chairman of the Management Board



WORLDWIDE NETWORK



Our reach knows no bounds! From north to south, from east to west, our production sites are spread around the world. Our network enables us to address the needs of our customers in a fast and efficient manner. No matter where you are, we have a location near you.

With our internationally operating team, outstanding production facilities and experienced logistics specialists, we bring equipment anywhere demand exists. In case of technical problems, experts support our customers to provide the right spare parts and give effective advice.

■ = Production locations
 ■ = Sales and service locations

EVEN STRONGER TOGETHER

The Equipment segment of the BAUER Group – A community of strong companies who benefit from the know-how and experience of the individual members.



BAUER Maschinen GmbH develops, produces and sells the full range of innovative equipment for special foundation engineering as well as for the exploration, mining and extraction of natural resources.



Within Bauer, RTG Rammtechnik GmbH is the center of expertise for telescopic leaders, pile driver with fixed leader and highfrequency vibrators for the vibration driving of sheet pile walls.



KLEMM Bohrtechnik GmbH is specialized in compact drilling rigs. The portfolio includes anchor drilling rigs of various sizes, injection equipment, hydraulic hammers, geothermal drilling rigs and a wide range of drilling accessories.



BAUER MAT Slurry Handling Systems develops and sells all-in-one systems for mixing and separating slurries along with centrifuges and pumps for all special foundation engineering requirements.



The Bauer Maschinen brand GEFCO based in Texas (USA) produces and sells the entire range of water well drilling equipment. Based on years of experience, GEFCO's products offer tailor-made encompassing solutions from a single provider.



EURODRILL GmbH with its modern production facilities is a specialist for rotary drives and high frequency hydraulic hammers.



TracMec Srl in Imola (Italy) is a specialized manufacturer of telescopic and rigid undercarriages with operating weights of up to 250 tons. The company's core areas of expertise are welding, cutting and design optimization of construction equipment.



SPANTEC Spann- & Ankertechnik GmbH, the specialist for clamping and anchor technology, is a complete provider of geotechnical products.

OUR HEART BEATS FOR ENGINEERING

Whether in Houston, Tianjin, or Schrobenhausen – Bauer Maschinen represents reliable quality at the highest level globally. In close coordination with our international network, we design, develop, and build machines that meet tomorrow's requirements today.

From large equipment, undercarriages, equipment for tensioning and anchoring, rotary drives, hydraulic hammers, parts manufacturing, drilling tools, and systems for mixing and separation, in our facilities within the BAUER Maschinen Group, we create the products that matter on our customers' construction sites.

What does this mean in concrete terms? At over 160 locations & service centers worldwide, in over 24 time zones and nearly 170 countries, more than 3,100 employees of the BAUER Maschinen Group work daily to find innovative technical solutions to simplify complex construction projects.

”

What drives us? The excitement when seeing our equipment on construction sites, which have been tackling the toughest soils for decades and still serve faithfully as they did on the first day.“

Wulf Flos
Management





THE RESULT OF OUR WORK: THE PRODUCT LINES



We build, weld and paint,

SPECIAL EQUIPMENT MANUFACTURERS

We are equipment manufacturers focusing on special foundation engineering. With our passion for technology and extensive specialist knowledge, we ensure the basis for stable foundations and impressive construction projects worldwide. Precision is our hallmark. We know that every millimeter counts when it comes to building a load-bearing foundation.

Our machines undergo a thorough and sophisticated development process. This process includes research and development, design, prototype construction, production preparations, manufacturing, quality control and delivery. Our team of experts work hard to create innovative solutions and produce high-quality equipment. We place a high value on quality, efficiency and safety to provide first-rate equipment to our customers worldwide.

We build equipment for special foundation engineering and related areas. We are market researchers, developers, process specialists, equipment operators and instructors. Why? Because our machines are more than just steel and iron. We view ourselves as partners to our customers. Working together, we develop custom solutions that fulfil the specific requirements of each project.

”

We are equipment manufacturers for special foundation engineering. And a whole lot more!“

Dr.-Ing. Rüdiger Kaub
Chairman of the Management Board



For more information about the product lines of Bauer Maschinen, simply hier.



bolt, assemble and fine-tune ...



... and convince customers with our finished **product lines**.



Drilling rigs

Our products for all challenges

Special foundation engineering is so much more than just drilling boreholes. The requirements for construction sites is becoming increasingly complex. Requirements Bauer drilling rigs handle capably. Not only do we continually develop our portfolio, we also focus on digitalization, assistance systems and automation: especially our eBG electric series. Ensuring a clean and sustainable future.



ValueLine drilling rigs

Equipment for Kelly drilling

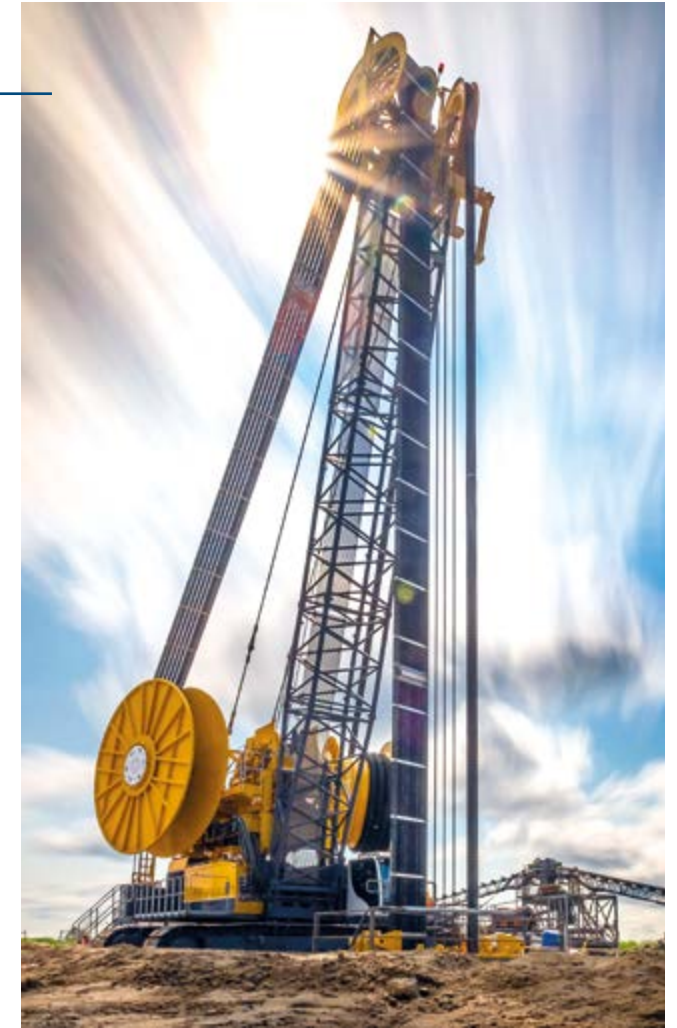
Our application specialists feature the latest efficient technology. They deliver consistent performance and focus on what matters most: drilling.



Trench cutters

High-performance classics

Market leading diaphragm wall equipment, modifiable for jobs with different components from our toolkit is often used when tasks have to be accomplished under difficult conditions. This results in outstanding applications, for example at sea or onland at a depth of 250 meters.



Grab systems

Experts in efficiency and economy

These extremely versatile machines are the bedrock of special foundation engineering. With their smart assistance systems, they excel when it comes to convenience and safety.





Mixing, pumping and separation technology
Not all slurries are created equal

Our equipment sets industry milestones like: Efficiency of assembly, high performance and modern digital features. Desanding plants are a key component in the process of separating soil particles from drilling and support slurries used in foundation engineering.



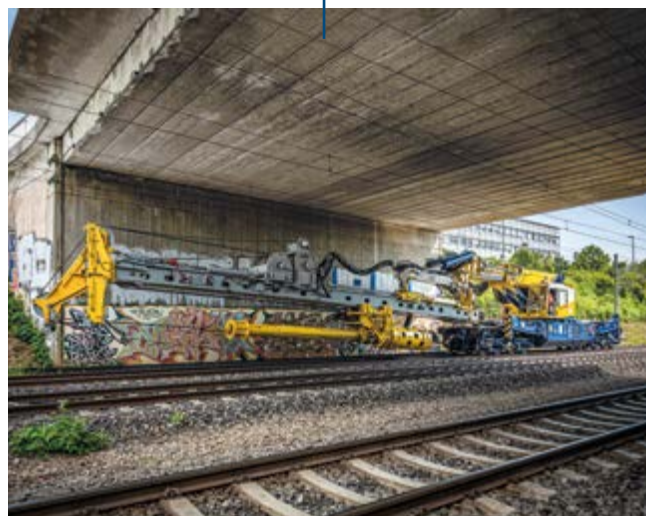
Anchor drilling technology
Mobile, smart, future-oriented

KLEMM Bohrtechnik represents robust and sophisticated technology which can be used nearly anywhere and under almost all conditions. These mobile drilling rigs with a total weight of up to 32 tons are true all-rounders. Klemm is also active in the field of geothermal applications.



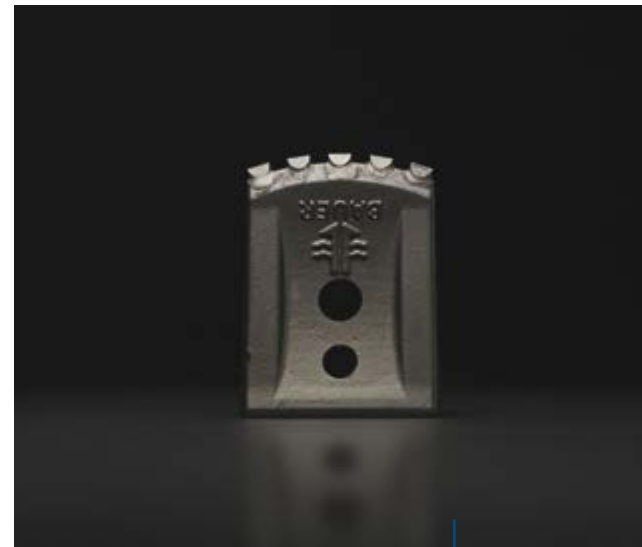
Pile driving equipment
Technological forerunners with a vision

Driving, impact driving, pressing, drilling or soil mixing: the applications of RTG pile drivers are varied. In the innovation workshop, new solutions are continually developed. For example: the Multi-Shaft-Mixing-System (MSM) for use in contaminated soils, or the trackpiler for work directly on railway tracks.



Duty-cycle cranes
Masters of versatility

Each MC duty-cycle crane is designed to fulfil the needs of special foundation engineering. They offer the full spectrum of optimized and specially tailored applications. Whether dynamic soil compaction or work requiring large coverage and crowd force during drilling, it's all possible with only one machine.



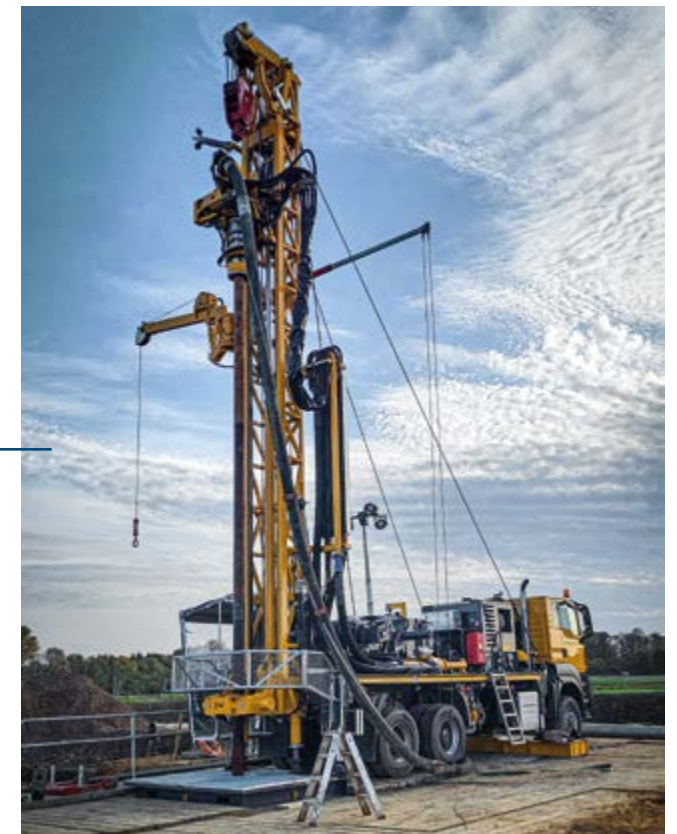
Drilling tools and accessories
What makes our equipment perfect

A successful site always starts with the right tools and other accessories. That's why it is extremely important to rely on quality and proven construction components.

Mobile rigs

Solutions for the essential area of water and raw materials

Our portfolio covers the entire range of applications, from shallow home wells to very deep large diameter wells and from mineral exploration to geothermal heat. Our BAUER RB series and GEFCO multipurpose mobile rigs are known for their high flexibility in drilling methods and customer-specific solutions.



PERFECT SERVICE FOR EQUIPMENT

Thanks to the specialized service and the use of highquality consumable parts, we are able to considerably increase the lifespan of our equipment. With our expert knowledge and regular maintenance we minimize wear and maximize equipment performance. This ensures sustainable and efficient site management.

Our global network enables us to optimise the supply of consumable parts and ensure that our service technicians quickly arrive at your location. Additionally we offer the CustomerCenter, a convenient and reliable way to check parts availability and manage orders.

A rapid response in the event of technical problems and breakdowns is a natural part of our service. We understand that downtime can be costly, which is why we offer reliable support to minimize idle time. In this context, Bauer Maschinen offers a fast, straightforward digital solution: BAUER Remote Service. This is a digital service which simply requires a smartphone camera.



For more information about the services of Bauer Maschinen, simply click here.



FOR THE WORLD OF TOMORROW

Special foundation engineering projects have always been a challenging endeavor. Using digitalization and new technologies, however, new options are continually arising that can optimize processes or make them more sustainable. Resource efficiency, avoiding excessive noise generation, straightforward handling and reduction of fossil fuel carriers are the priorities of our product philosophy.

Throughout our value chain, we actively promote environmentally friendly practices and participate in numerous research projects to develop new methods and technologies which are more efficient and sustainable and make work easier. Smart transport options, sophisticated assistance systems, efficient drive concepts and digital solutions are key components which positively contribute to enhanced sustainability over the entire lifespan of our products.

Sustainability also means accepting social responsibility. The safety and well-being of our employees is important to us. This is why we established the necessary frameworks and share ideas intensively between our locations.

Through a large variety of education concepts, we are able to establish and expand on areas of expertise worldwide.

Particularly in the construction sector, it is important to minimize CO₂ emissions. For this reason, we constantly ask ourselves: Do any solutions exist that are even more intelligent and effective, taking a larger step towards climate neutrality? And how can we implement them?

Sustainability is not just an empty promise to us: this is a living promise for our products, services, employees and partners.



”

With our passion and wealth of ideas, we make a contribution to enhanced sustainability in special foundation engineering every day.“

Prof. Dr.-Ing. Sebastian Bauer
Management



For more information about the compact and powerful BAUER Cube System, simply click here.

BAUER Cube System
Compact and powerful cutter system for tight construction situations, particularly suited for use in tunnels.



OUR EXPERIENCE – YOUR BENEFIT

There are a variety of methods and applications in special foundation engineering. Apart from the requirements for construction, factors such as the composition of the construction soil – particularly for rock – along with topics such as site logistics and material properties must be considered when selecting the right method and equipment, as well as the appropriate tools. As experts in special foundation engineering equipment, we offer an extensive range of solutions.

Our experience has taught us that some construction situations require an even more specific approach. This could be because the task is particularly complex, a second opinion is needed about how to proceed optimally, or new conditions arise on site that require an adjustment of the original plan. We offer professional consulting to our customers – directly on site. We want our customers to use their Bauer equipment optimally and bring their projects to a successful conclusion.

You can also benefit from our knowledge of different methods and applications in special foundation engineering. Together, we can create solutions, optimize methods or develop entirely new procedures.




For more information about the methods of Bauer Maschinen, simply click here.



WE TRAIN PROFESSIONALS

The BAUER Training Center teaches employees, customers and partners how to handle Bauer equipment safely and efficiently. Our experienced trainers provide skilled training with a practical focus. Whether for equipment operators, mechanics or service partners, we design our training entirely based on the requests of our customers and also offer individual seminars and training units tailor-made to their needs. In the process, our customers benefit from our many years of seminar experience and our constant progress which ensures that our services remain at the highest level. Take advantage of our worldwide network of certified trainers and experience our extensive training and development opportu-


nities for yourself: at one of our regional training centers or directly at our headquarters in Schrobenhausen.

 For more information about the seminars, simply click here.

STRAIGHTFORWARD, EFFICIENT, DIGITAL

The requirements for construction sites are constantly growing. With our technology we help our customers to meet those requirements. For example the B-Tronic, the user interface of our Bauer equipment, which far exceeds simple operation of the machines. In the latest generation, the B-Tronic 5, our key innovation is to place the production process in the foreground. We also facilitate the intuitive operation of our equipment with assistance systems that can be used to execute pending tasks safely and reliably. For all these innovations, data and equipment networking play an important role. Using our two software solutions WEB-BGM and fielddata, it is possible to save, analyze or display recorded machine and production data in the form

of drilling logs. Furthermore, equipment and special foundation engineering projects can be managed digitally, ensuring an complete overview at all times.

 For more information about the new B-Tronic 5 from Bauer Maschinen, simply click here.



Design developments and process improvements may require the specification and materials to be updated and changed without prior notice or liability. Illustrations may include optional equipment and not show all possible configurations.

These and the technical data are provided as indicative information only, with any errors and misprints reserved.



BAUER Maschinen GmbH
BAUER-Strasse 1
86529 Schrobenhausen
Germany
Phone: +49 8252 97-0
bma@bauer.de
www.bauer.de