

SPECIAL

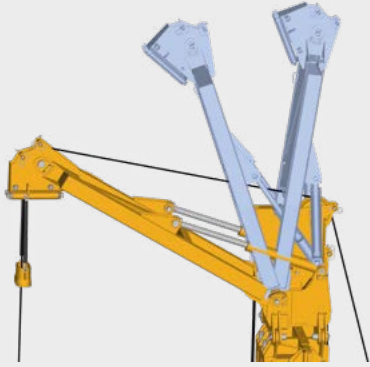
BAUER BG 20 H

Rotary Drilling Rig Base Carrier BT 75

PremiumLine

 Energy-Efficient
Power **EEP**



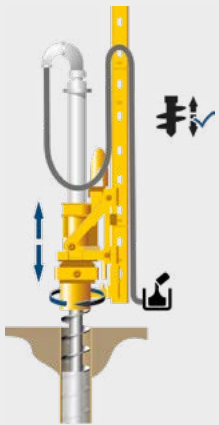
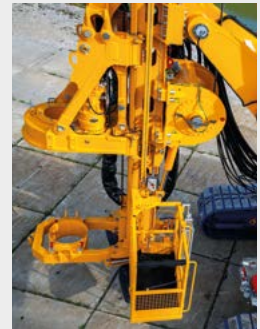


Special masthead

- Auxiliary rope boom can be tilted hydraulically in the drill axis
- Mast head sideways foldable for reduced transport length

Personal hoist system with transport platform

- Mast-guided personal hoist system with slewable transport platform
- Allows safe access on the mast for service and work needs



Automatic drilling and extraction control for FDP Lost Bit

- The system controls the drilling and / or extraction speed of the crowd system and enables hands-free operation. This ensures the production of a high-quality pile while simultaneously minimizing the amount of concrete.
- For FDP Lost Bit the following automatic extraction modes are available:
 - Automatic extraction control with “B-Drive”
 - Automatic extraction control with “Pitch Control”
 - Automatic extraction control with “Concrete Level”



Wide working range

- A horizontal movement up to 1,700 mm allows a maximum on flexibility



- Reduction of fuel consumption by up to 30%
- Increased productivity through improved efficiency
- Significantly reduced noise levels
- Tried and proven suitability for practical application
- Optimized parallel operation of main and auxiliary consumers



Support and lifting package unit

- Hydraulic operated upper carriage supports for
 - Stabilizing the machine during drilling operations
 - Lifting the machine to allow the crawlers to be rotated by 360°

High-pressure cleaner with water tank

- High-pressure washer with gun and water tank (capacity 650 l)
- Fully integrated into base carrier for independent cleaning on jobsite
- Additional cleaning system for concrete hopper
- Optional high pressure cleaner hose rewinding unit



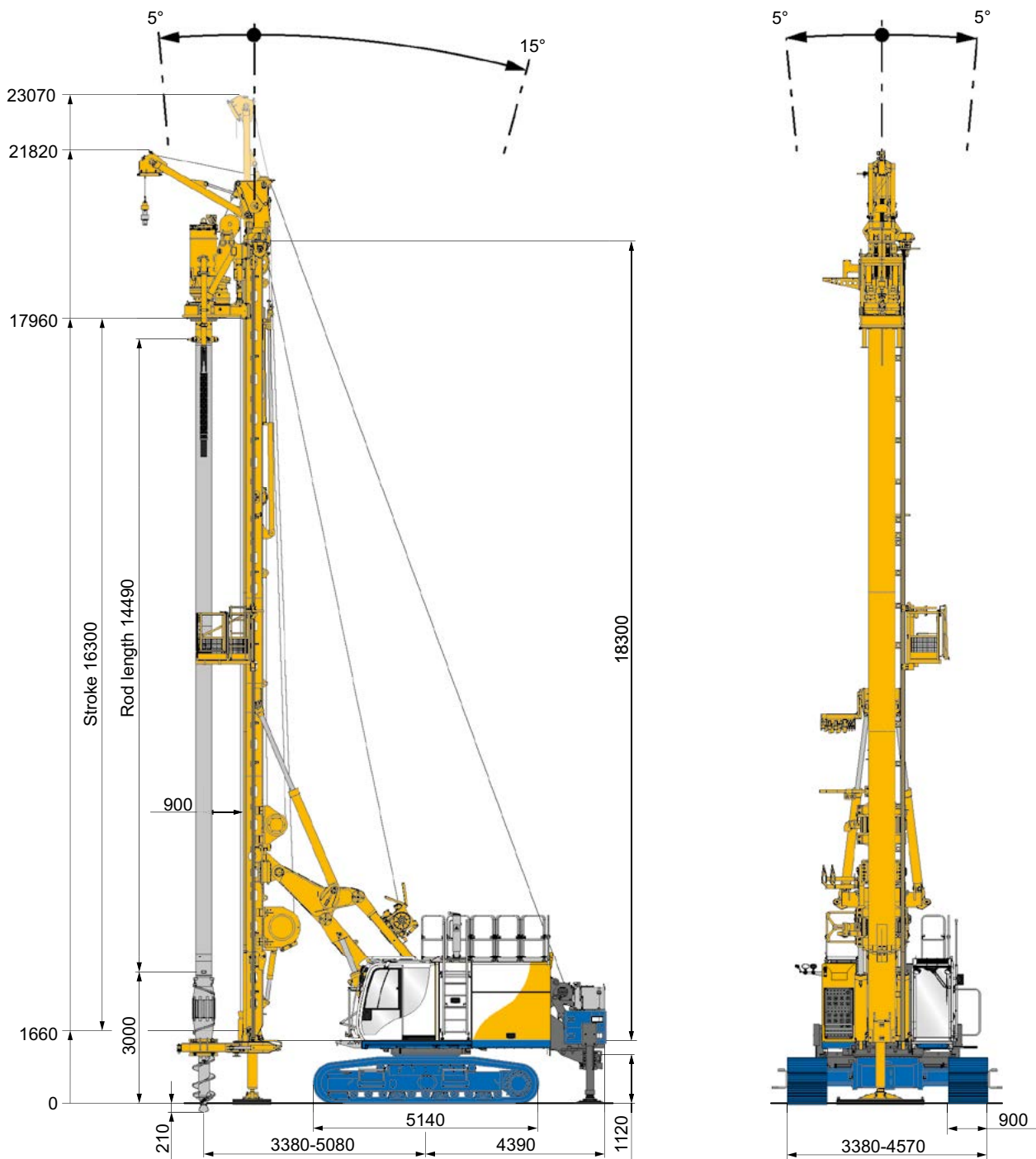
Compact transport dimensions

- Transport of the complete machine incl. equipment possible
- Lower mast section foldable for transport

Remote control multi for rigging the machine

- Remote control for numerous rigging functions outside the danger zone, such as moving the drilling rig, telescoping the under carriage, etc.
 - Operation within sight of the controlled rigging functions
 - Rugged and compact wireless remote control multi with LCD screen
 - Lockable storage box for the remote control can be accessed from the ground

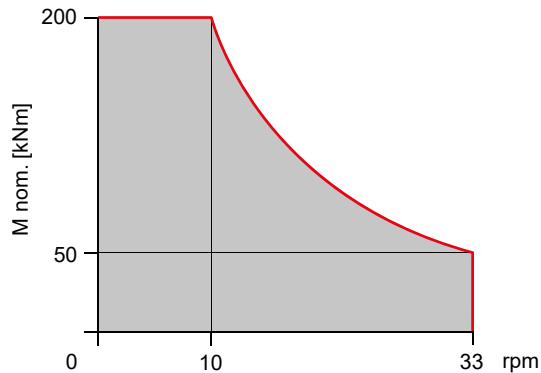




Operating weight 73.5 – 75.7 t *
Max. drill depth 16.3 m (as shown)
Max. drill depth 16.0 m (recommended)

* depending on equipment

Rotary drive	KDK 200 KL
Torque (nominal) for casing operation at 350 bar	200 kNm
Max. speed of rotation	33 rpm



Crowd winch			
Max. sledge stroke	16,300 mm		
Crowd force push and pull, effective/nominal	260 / 333 kN		
Rope diameter	22 mm		
Speed (down/up)	10.5 m/min		
Fast speed (down/up)	30.5 m/min		
Main winch			
Winch classification	M6 / L3 / T5		
Line pull (1st layer) effective/nominal	170 / 210 kN		
Rope diameter	26 mm		
Max. line speed	83 m/min		
Auxiliary winch			
Line pull (1st layer) effective/nominal	35 / 45 kN		
Rope diameter	15 mm		
Max. line speed	58 m/min		
Base carrier (EEP)			
	BT 75		
Engine	CAT C 9	CAT C 9.3	CAT C 9.3 B
Rated output ISO 3046-1	280 kW @ 1,850 rpm	298 kW @ 1,850 rpm	310 kW @ 1,850 rpm
Exhaust emission EEC 97/68 EC	ORA *	Stage IV	Stage V
EPA/CARB		Tier 4 final	Tier 4 final
Diesel tank capacity / AdBlue Tank	730 / - l	730 / 48 l	730 / 48 l
Sound pressure level in the cabin (EN 16228, Annex B)	LP _A 80 dB (A)		
Sound power level (2000/14/EC u. EN 16228, Annex B)	LW _A 112 dB (A)		
Hydraulic pressure	350 bar		
Hydraulic oil tank capacity	650 l		
Flow rates	2 x 250 + 1 x 400 + 1 x 135 l/min		
Under carriage			
	UW 60		
Crawler type	B 60		
Track shoes	900 mm		
Traction force effective/nominal	450 / 530 kN		

*Exhaust emission equivalent Tier 3 / Stage III A emission standards

B-Tronic

The BAUER B-Tronic system allows completion of construction tasks in a reliable and accurate manner, even under extreme operating conditions.

- The high-resolution touchscreen display ensures excellent user-friendliness
- The display can be optimally adapted to the operating situation and the amount of light present by changing the brightness level, the color scheme and the day / night mode
- The main parameters such as pump pressure, torque and drilling depths can be viewed at a glance



B-Drive

The B-Drive is a central operating and visualization system

- B-Drive combines adjustable potentiometer values on one display
- Ergonomic positioning of the display on the right column of the operator's cab

Tablet

The tablet is the multi-functional tool for the Bauer machine

- Online access to the customer portal, handbooks, equipment management systems and much more
- Standard internet connection via the DTR module, which is located in the machine
- The operator's screen can be mirrored live on the tablet to track the operating process



Device networking

DTR module

- The DTR module allows equipment and production data to be made available to a wide variety of users

WEB-BGM

- WEB-BGM is a software used to retrieve equipment data and establish the locations of various machines, even if you are not on site

B-Report

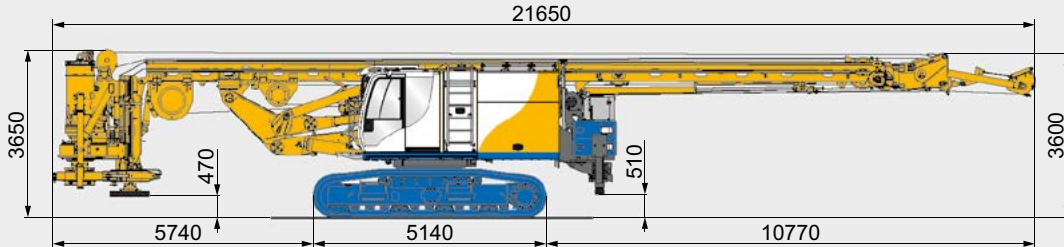
- Standardized reports for the documentation of drilling progress and verification of performance and quality

G = Weight
B = Width

Weights shown are approximate values; optional equipment may change the overall weight.

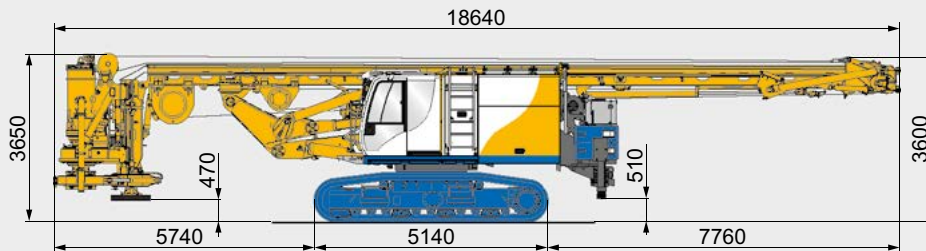
Transport with rotary drive and counterweight

G = 68.6 - 69.7 t (with counterweight 6.7 - 7.4 t) * / **



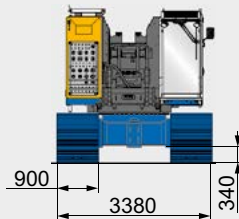
Transport with rotary drive, counterweight and folded mast head

G = 68.6 - 69.7 t (with counterweight 6.7 - 7.4 t) * / **



Base carrier BT 75 with under carriage UW 60

B = 3.380 mm



* depending on equipment (e.g. type of track shoes)

** on request lower transport weight possible by disassembly of counterweight, water tank and rear support unit



Global Network



Service



Equipment



Training

International Service Hotline

+800 1000 1200* (freecall)

+49 8252 97-2888

BMA-Service@bauer.de

* Where available



PremiumLine



BAUER Maschinen GmbH
BAUER-Strasse 1
86529 Schrobenhausen
Germany
Tel.: +49 8252 97-0
bma@bauer.de
www.bauer.de

Design developments and process improvements may require the specification and materials to be updated and changed without prior notice or liability. Illustrations may include optional equipment and not show all possible configurations. These and the technical data are provided as indicative information only, with any errors and misprints reserved.